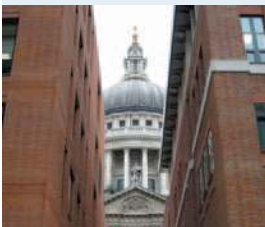


TIMBERWISE



Commercial Basement Solutions



The Problem

Over recent years there has been an ever increasing demand for more useable space within commercial buildings of all kinds of usage. Often the costs of extending your business are prohibitive, time consuming and undoubtedly at some point will require planning permission. As a result there is now a widespread demand for the conversion of old damp basement areas into dry usable areas that can be used as extra selling space or for storage. The most critical issue in the conversion of a damp basement area is the requirement of an effective, efficient and long lasting waterproofing system. With an increase in regional flooding and the presence of rising ground water it is inevitable that more and more basements have been subjected to seepage and in the worst case flooding.

Timberwise have been at the forefront in basement water control and the creation of dry basement space for many years and can provide the ideal solution for the problem of a flooded basement and give you the extra space you need.

The Solution

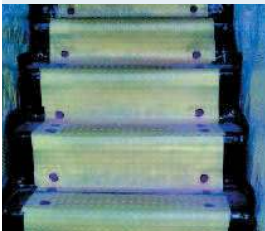
Timberwise offer a full feasibility, design and installation service for commercial clients. We install bespoke waterproofing solutions, provide specialist advice and offer systems that suit the clients desired use for the basement area. We can turn your cold, damp basement into the extra room that you crave with minimum inconvenience to yourself.

In the majority of cases we offer an advanced Cavity Drainage Basement Waterproofing system. This systems comprises of:

- A full surface membrane system
- A drainage system

As Timberwise are registered installers for the leading manufacturers of basement conversion products our experienced Surveyors can recommend the best product to suit your basement conversion. All our basement solutions also offer long term insurance backed guarantees and service agreements along with our design and installation services ensuring you have complete peace of mind.

Commercial Basement Solutions



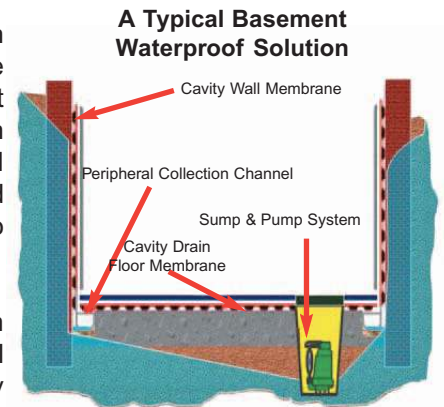
Technical Information

Our basement waterproofing systems work in harmony with the construction of the basement and the water problem its self, not attempting to 'stop' the flow of water, but, in fact control the flow through designed drainage. The membranes can be fitted relatively easily allowing the wall surfaces to be then dry lined or plastered directly.

The wall membrane and fixing system comprises a CFC and HCFC free material waterproof membrane that is mechanically fixed to the basement wall. This forms a protective underlay for plaster boarding or other lining. The fixing is by a spike that forms a mechanical grip deep in the substrate. Membrane sheets are joined using a self-adhesive foil tape.

Water that gathers behind the membrane and descends to its lower edge is drained into a drainage system. The channel has perforations at the rear, enabling water entry into the channel to flow freely to a sump or other drain. An upright flange at the rear of the channel collects water from the back of the membrane.

All Timberwise Basement Solutions comply with BS8102.



Why Use Timberwise?

- Professional competence
- Approved by leading Architects / Surveyors
- Long-term guarantees backed by the GPT
- Fast friendly local service nationwide
- Fully insured for Public Liability and Professional Indemnity
- Speedy, efficient and competitive
- Health & Safety approved products
- Conscientious and tidy workmanship from trustworthy tradesmen

Over the decades Timberwise have treated in excess of 200,000 properties throughout the UK. With Timberwise you can be safe in the knowledge that your property is cared for by the professionals.

Contact us on **0800 99 11 00**

enquiries@timberwise.co.uk

www.timberwise.co.uk